

For FAQs and more information, please visit

www.lenkeng.com 🔍

Or scan the QR code below



V26.01



SHENZHEN LENKENG TECHNOLOGY CO., LTD

Add: 3F & west 4F, Jinguangxia Culture & Tech Park, 3 Guangxia Road Futian District, Shenzhen, Guangdong, China, 518049.

Tel: +86(0)755-8359 3885

E-mail: sales@lenkeng.com

Fax: +86(0)755-8250 0201

01.

VIDEO TRANSMISSION

P06 Point-to-Point HDMI Extender over CAT Cable

LKV372S-V2.0
LKV372Pro-4.0
LKV410P
LKV565P
LKV675
LKV676Cascade-I
LKV600TH-L
LKV610HH
LKV565W-US
LKV676P-US

P10 One-to-Many Over IP Extender over CAT Cable

LKV373E-5.0
LKV373A-5.0
LKV383-5.0
LKV383Pro-5.0
LKV383POE-5.0
LKV683-5.0
LKV473 | LKV473TypeC
LKV483 | LKV483TypeC
LKV483Pro
LKV483POE
LKV562
LKV592-V2.0
LKV593-V3.0

P18 One-to-Many Over IP Extender over Optical Fiber

LKV752
LKV982
LKV993-V3.0

02.

KVM

P21 Point-to-Point KVM Extender

LKV372KVM-P
LKV565KVM-P
LKV676KVM-PI

P23 One-to-Many Over IP KVM Extender over CAT Cable

LKV373E-KVM-5.0
LKV373KVM-5.0
LKV473KVM
LKV562KVM
LKV582KVM-USB2.0
LKV592KVM-V2.0
LKV593KVM-V3.0

P27 One-to-Many Over IP KVM Extender over Optical Fiber

LKV752KVM
LKV762KVM
LKV982KVM
LKV993KVM-V3.0

03.

USB EXTENDER

P30 USB2.0 Extender

LKV100USB

P31 USB3.0 Extender over CAT Cable

LKV300USB
LKV300USB-RS

P32 USB3.0 Extender over Optical Fiber

LKV320USB-MMF-V3.0
LKV320USB-SMF-V3.0

04.

WIRELESS EXTENDER

P34 Point-to-Point Wireless Extender

LKV433Mini
LKV466Mini

P35 16TX-to-1RX Wireless Extender

LKV455Mini-V2.0 | LKV477Mini-V2.0 | LKV488Mini-V2.0
LKV455TypeC-V2.0 | LKV477TypeC-V2.0 | LKV488TypeC-V2.0

P36 1TX-4RX Wireless Extender

LKV655-V2.0
LKV677-V2.0
LKV699E

P37 Latency< 16ms Wireless Extender

LKV899(Wi-Fi 7)

P39 Wireless KVM Extender

LKV655E-KVM-V2.0 | LKV677E-KVM-V2.0 | LKV699E-KVM-V2.0
LKV655KVM-V2.0 | LKV677KVM-V2.0 | LKV699KVM-V2.0
LKV799-V2.0(60G)
LKV899KVM(Wi-Fi 7)

05.

VIDEO SIGNAL PROCESSOR

P42 Video Wall Controller

LKV104VW
LKV104VW-V2.0
LKV109VW-V2.0
LKV144VW
LKV592VW

P44 Multi-view Switcher

LKV401MV-V2.0
LKV401MV-4K@60Hz-V2.0

06.

SWITCHER

P46 Video Switcher

LKV841 | LKV844

P47 KVM Switch / Switch Extender

LKV441 | LKV441EX

P48 Matrix Switch

LKV422 | LKV424

07.

SPLITTER

P50 HDMI Splitter

LKV862 | LKV864
LKV312EDID-V3.0 | LKV314EDID-V3.0 | LKV318EDID-V3.0

P52 HDMI Splitter Extender

LKV722P-N | LKV724P-N
LKV822P-N | LKV824P-N | LKV828P-N
LKV314-HDbitT-5.0 | LKV318-HDbitT-5.0
LKV314-4K60Hz-HDbitT-5.0 | LKV318-4K60Hz-HDbitT-5.0

08.

CONVERTER

P55 HDMI to DVB-T Converter

LKV479P-DVB-T
LKV579P-DVB-T
LKV679P-DVB-T-V2.0

09.

DIGITAL SIGNAGE SYSTEM

P62 Digital Signage System

DSS02Dongle
DSS02
DSS02W
DSS02-4G
DSS03-8K

10.

IPCOLOR MULTIMEDIA MANAGEMENT SYSTEM

P65 Matrix over IP

LKV373-M5.0
LKV383-M5.0
LKV473-M5.0
LKV483-M5.0

P67 Matrix with 5x5 Video Wall

iMMS-IM01
iMMS-IM02

P69 KVM over IP Matrix

LKV373KVM-M5.0
LKV473KVM-M5.0
iMMS-IM03-KVM

P70 3x3 Multiview Receiver

iMMS-RX-Multiview

P71 Audio Matrix

LKV373Audio-5.0
LKV383Audio-5.0
iMMS-Audio

P73 Controller

iMMS-Controller-Serial Port
iMMS-Controller-IR

P75 Network Video Recorder

iMMS-Recorder

COMPANY PROFILE

Established in 2004, global leading UHD video transmission solutions provider.

Years of quickly growing, products have been exported to more than 100 countries and regions worldwide.

Widely used in monitor center, rail transit, education, medical, high-tech manufacturing, conference room, home entertainment, digital signage and other areas.

The adopter of HDMI, HDCP and HDBaseT alliance, and the global strategy promoter of ipcolor protocol.

CERTIFICATES AND AWARDS

National High and New Technology Enterprise

ISO9001:2015 | HDCP | HDMI Adopter | AVIXA Membership | HDBaseT Membership |

ipcolor Strategic Promoter | BSCI Report | FCC | CE | RoHS

51

Utility Patents

53

Invention Patents

40

Design Patents

26

Copyrights



01.

VIDEO TRANSMISSION

LENKENG video extenders solutions include point to point, one to many, over IP, utilizing Ethernet cable or optical fiber signal to extend AV, RS-232, or IR signals, with zero latency as well as resistance to environmental interference.



Point-to-Point HDMI Extender over CAT Cable

LKV372S-V2.0



50M 1080P@60Hz Mini HDMI Extender

- * Visually Lossless HDMI signal, Zero-latency transmission.
- * Supports up to 1080P@60Hz resolution.
- * Transmission Distance: 50m over CAT6/6A/7.
- * PoC(Power over Cable), only TX power supply is needed.

LKV372Pro-4.0



70M Point-to-Point HDMI Extender

- * Zero latency.
- * Supports up to 4K@30Hz resolution.
- * Supports CAT6/6A/7 network cables, 1080p@60Hz transmission distance is up to 70meters, 4K@30Hz transmission distance is up to 40 meters.
- * Supports IR pass-back function (20-60KHz).
- * Supports HDR10.
- * Supports HDMI loop out.
- * PoC(Power over Cable), only TX power supply is needed.
- * Automatically adjusts parameters to match different network cables and achieve the best display performance.
- * Plug and play.

LKV410P



60M 4K@60Hz Point-to-Point HDMI Extender

- * Zero-latency transmission.
- * Extends 4K@60Hz HDMI signal up to 60m/197ft over Cat6/6A/7 cable.
- * Supports up to 3840x 2160@60Hz resolution, backward compatible.
- * Supports HDR10.
- * Supports EDID pass through and auto downscaling.
- * Lightning protection, surge protection, ESD protection.
- * PoC(Power over Cable), only TX power supply is needed.

LKV565P



70M 4K@60Hz HDR HDMI Extender

- * Zero-latency transmission.
- * Supports up to 4K@60Hz resolution.
- * Transmission Distance: 70m over CAT6/6A/7.
- * Audio Extraction: 3.5mm L/R on Receiver.
- * HDR10 | EDID pass-through and auto down-scaling.
- * Local HDMI loop output on Transmitter.
- * Lightning protection, surge protection, ESD protection.
- * PoC(Power over Cable), only TX power supply is needed.

70M 4K@60Hz HDMI HDBaseT2.0 Extender

- * Uncompressed HDMI video signal.
- * Supports up to 4K@60Hz resolution.
- * Transmission Distance: 70m over CAT6/6A/7.
- * HDBaseT2.0, HDMI2.0, HDCP2.2, CEC, 24bits deep color.
- * Bi-directional IR pass-back(20~60KHz), control your source (such as a cable box or BlueRaylayer) from the TV side and TV from the source side (when utilizing third-party control systems).
- * Bi-directional RS-232 Passback, connect to serial terminals or serial devices such as touch screens and barcode scanners.
- * Audio formats supported: Dolby Digital, DTS Digital, LPCM.

70M 4K@60Hz Zero latency HDMI Extender with 10 Receivers Cascade

- * Zero-latency transmission.
- * Supports up to 4K@60Hz resolution.
- * Transmission Distance: 70m over CAT6/6A/7.
- * Supports up to 10 Receivers cascade.
- * Audio Extraction: S/PDIF on Receiver.
- * HDR10 | EDID pass-through and auto down-scaling.
- * Local HDMI loop output on Transmitter.
- * Bi-directional IR Pass-back(20~60KHz).
- * Lightning protection, surge protection, ESD protection.

LKV675



LKV676Cascade-I



LKV600TH-L



4K@120Hz Zero-Latency HDR Type-C to HDMI Extender with Extended Cable

- * Inputs: Type-C | Outputs: HDMI.
- * Zero-latency transmission.
- * Supports up to 4K@120Hz resolution.
- * Transmission Distance: 60m(4K@60Hz) / 30m(2560x1440@120/144Hz) / 25m(4K@120Hz) over CAT6/6A/7.
- * HDR10 | 3D | EDID pass-through and auto down-scaling.
- * The transmitter can get charged from source through Type-C port.
- * Audio formats supported: LPCM/DTS-HD/DTS-Audio/Dolby Digital 5.1CH.
- * Compatible systems: Mac OS, Windows, iOS, Android, Chrome and so on.
- * Compact design, plug and play.
- * Lightning protection, surge protection, ESD protection.

LKV610HH



4K@120Hz Zero-Latency HDR HDMI to HDMI Extender

- * Inputs: HDMI | Outputs: HDMI.
- * Zero-latency transmission.
- * Supports up to 4K@120Hz resolution.
- * Transmission Distance: 60m(4K@60Hz) / 30m(2560x1440@120/144Hz) / 25m(4K@120Hz) over CAT6/6A/7.
- * Audio Extraction: 3.5mm L/R on Receiver.
- * IR pass-back (20~60KHz) | RS-232 pass-through.
- * HDR10 | 3D | EDID pass-through and auto down-scaling.
- * Audio formats supported: LPCM/DTS-HD/DTS-Audio/Dolby Digital 5.1CH.
- * Compatible systems: Mac OS, Windows, iOS, Android, Chrome and so on.
- * Compact design, plug and play.
- * Lightning protection, surge protection, ESD protection.

LKV565W-US



4K@60Hz HDR Wall-Plate HDMI Extender

- * Zero-latency transmission.
- * Supports up to 4K@60Hz resolution.
- * Transmission Distance: 70m over CAT6/6A/7.
- * HDR10 | EDID pass-through and auto down-scaling.
- * IR pass-back (20~60kHz) .
- * PoC(Power over Cable), only TX power supply is needed.
- * Audio Extraction: 3.5mm L/R on Receiver.
- * Lightning protection, surge protection, ESD protection.

LKV676P-US



4K@60Hz HDR Wall-Plate HDMI Extender

- * Zero-latency transmission.
- * Supports up to 4K@60Hz resolution.
- * Transmission Distance: 70m over CAT6/6A/7.
- * Wall socket design: The Transmitter can be embedded in the wall.
- * HDR10 | EDID pass-through and auto down-scaling.
- * IR pass-back (20~60kHz).
- * PoC(Power over Cable), only RX power supply is needed.
- * Lightning protection, surge protection, ESD protection.

LKV373E-5.0



1080P@60Hz over IP HDMI Extender

- * Supports up to 1080P@60Hz/1920x1200 resolution.
- * Transmission Distance : 120m over CAT6/6A/7, 100m over CAT5e, 80m over CAT5.
- * IR pass back.
- * One to One | One to Many | Switches Cascade(100Mbps Switch).
- * Stable 24/7 operation.
- * Lightning protection, surge protection, ESD protection.

LKV373A-5.0



1080P@60Hz over IP HDMI Extender

- * Supports up to 1080P@60Hz/1920x1200 resolution.
- * Transmission Distance: 120m over CAT6/6A/7, 100m over CAT5e, 80m over CAT5.
- * One to One | One to Many | Switches Cascade(100Mbps Switch).
- * Stable 24/7 operation.
- * Lightning protection, surge protection, ESD protection.

LKV383-5.0



1080P@60Hz over IP + IR HDMI Extender

- * Supports up to 1080P@60Hz/1920x1200 resolution.
- * Transmission Distance - One to One: 200m over CAT6/6A/7.
- * Transmission Distance - One to Many: 120m over CAT6/6A/7, 100m over CAT5e, 80m over CAT5.
- * One to One | One to Many | Switches Cascade(100Mbps Switch).
- * IR pass-back(20~60KHz).
- * Wall-mountable design, convenient for installation.
- * Stable 24/7 operation.
- * Lightning protection, surge protection, ESD protection.

1080P@60Hz over IP + IR HDMI Extender

- * Supports up to 1080P@60Hz/1920x1200 resolution.
- * Transmission Distance - One to Many: 120m over CAT6/6A/7, 100m over CAT5e, 80m over CAT5.
- * One to One | One to Many | Switches Cascade(100Mbps Switch).
- * IR pass-back(20~60KHz).
- * Wall-mountable design, convenient for installation.
- * Stable 24/7 operation.
- * Lightning protection, surge protection, ESD protection.
- * HDMI Loop-out is available.

LKV383Pro-5.0



LKV383POE-5.0



1080P@60Hz over IP + IR HDMI Extender

- * Supports up to 1080P@60Hz/1920x1200 resolution.
- * Transmission Distance : 120m over CAT6/6A/7, 100m over CAT5e, 80m over CAT5.
- * One to One | One to Many | Switches Cascade(100Mbps Switch).
- * IR pass-back(20~60KHz).
- * Wall-mountable design, convenient for installation.
- * Stable 24/7 operation.
- * Lightning protection, surge protection, ESD protection.
- * POE(Power over Ethernet) is available.

LKV683-5.0



4K@30Hz over IP + IR HDMI Extender

- * Supports up to 4096x2160@30Hz/3840x2160@30Hz resolution.
- * Transmission Distance : 120m over CAT6/6A/7, 100m over CAT5e, 80m over CAT5.
- * One to One | One to Many | Switches Cascade(100Mbps Switch).
- * IR pass-back(20~60KHz).
- * Wall-mountable design, convenient for installation.
- * Stable 24/7 operation.
- * Lightning protection, surge protection, ESD protection.

LKV473



4K@60Hz over IP HDMI Extender

- * Supports up to 4096x2160@60Hz/3840x2160@60Hz resolution.
- * Transmission Distance - One to One: 200m over CAT6/6A/7.
- * Transmission Distance - One to Many: 120m over CAT6/6A/7, 100m over CAT5e, 80m over CAT5.
- * One to One | One to Many | Switches Cascade(1Gb switch).
- * Stable 24/7 operation.
- * Lightning protection, surge protection, ESD protection.

LKV473TypeC



4K@60Hz over IP Type-C to HDMI Extender

- * Supports up to 4096x2160@60Hz/3840x2160@60Hz resolution.
- * Inputs: Type-C | Outputs: HDMI.
- * Transmission Distance - One to One: 200m over CAT6/6A/7.
- * Transmission Distance - One to Many: 120m over CAT6/6A/7, 100m over CAT5e, 80m over CAT5.
- * One to One | One to Many | Switches Cascade(1Gb switch).
- * Stable 24/7 operation.
- * Lightning protection, surge protection, ESD protection.

LKV483



4K@60Hz over IP + IR HDMI Extender

- * Supports up to 4096x2160@60Hz/3840x2160@60Hz resolution.
- * Transmission Distance - One to One: 200m over CAT6/6A/7.
- * Transmission Distance - One to Many: 120m over CAT6/6A/7, 100m over CAT5e, 80m over CAT5.
- * One to One | One to Many | Switches Cascade(1Gb switch).
- * IR pass-back(20~60KHz).
- * Stable 24/7 operation.
- * Lightning protection, surge protection, ESD protection.
- * POE(Power over Ethernet) is available.(LKV483POE)
- * HDMI Loop-out is available.(LKV483Pro)

LKV483TypeC



4K@60Hz over IP + IR Type-C to HDMI Extende

- * Supports up to 4096x2160@60Hz/3840x2160@60Hz resolution.
- * Inputs: Type-C | Outputs: HDMI.
- * Transmission Distance - One to One: 200m over CAT6/6A/7.
- * Transmission Distance - One to Many: 120m over CAT6/6A/7, 100m over CAT5e, 80m over CAT5.
- * One to One | One to Many | Switches Cascade(1Gb switch).
- * IR pass-back(20~60KHz).
- * Stable 24/7 operation.
- * Lightning protection, surge protection, ESD protection.

LKV483Pro



4K@60Hz over IP + IR HDMI Extender

- * Supports up to 4096x2160@60Hz/3840x2160@60Hz resolution.
- * Transmission Distance - One to One: 200m over CAT6/6A/7.
- * Transmission Distance - One to Many: 120m over CAT6/6A/7, 100m over CAT5e, 80m over CAT5.
- * One to One | One to Many | Switches Cascade(1Gb switch).
- * IR pass-back(20~60KHz).
- * Stable 24/7 operation.
- * Lightning protection, surge protection, ESD protection.
- * HDMI Loop-out is available.

LKV483POE



4K@60Hz over IP + IR HDMI Extender

- * Supports up to 4096x2160@60Hz/3840x2160@60Hz resolution.
- * Transmission Distance - One to One: 200m over CAT6/6A/7.
- * Transmission Distance - One to Many: 120m over CAT6/6A/7, 100m over CAT5e, 80m over CAT5.
- * One to One | One to Many | Switches Cascade(1Gb switch).
- * IR pass-back(20~60KHz).
- * Stable 24/7 operation.
- * Lightning protection, surge protection, ESD protection.
- * POE(Power over Ethernet) is available.

LKV562



Uncompressed 1080P@60Hz over 1G IP Extender

- * ipcolor PIXEL™: Uncompressed AV, ultra-low latency(< 16ms).
- * Supports up to 1080P@60Hz/1920x1200 resolution.
- * Transmission Distance: 150m over CAT6/6A/7, 100m over CAT5e, 80m over CAT5.
- * One to One | One to Many | Switches Cascade(1Gb switch).
- * EDID pass-back.
- * IR Pass-back(20~60KHz).
- * Audio Extraction: 3.5mm L/R.
- * Stable 24/7 operation.
- * Lightning protection, surge protection, ESD protection.

LKV592-V2.0



4K@60Hz Visually Lossless HDMI over 1G IP Extender

- * ipcolor IMAGE™: Visually-lossless AV, ultra-low latency(< 16ms).
- * Supports up to 4096x2160@60Hz/3840x2160@60Hz resolution.
- * Transmission Distance: 120m over CAT6/6A/7, 80m over CAT5/5e.
- * One to One | One to Many | Switches Cascade(1Gb switch).
- * HDR10 | EDID.
- * HDMI Audio Extraction via S/PDIF.
- * Bi-directional IR pass-back(20~60KHz).
- * RS-232 pass-through and command control.
- * Local HDMI loop output on transmitter.
- * Stable 24/7 operation.
- * Lightning protection, surge protection, ESD protection.

LKV593-V3.0



4K@60Hz Uncompressed over IP Extender with Receiver Cascade

- * ipcolor PIXEL™: Uncompressed AV, ultra-low latency(< 8ms).
- * Supports up to 4K60 resolution.
- * Transmission Distance: 100m over CAT6A/7, 80m over CAT6.
- * Unlimited Multi-receiver Cascade, no need 10G switch.
- * One to One | One to Many | Switches Cascade(10Gb switch).
- * Dolby Vision | HDR | HDR10.
- * HDMI Audio Extraction via S/PDIF.
- * Digital Audio Formats | CEC & ARC | EDID.
- * Bi-directional IR pass-back(20~60KHz).
- * RS-232 pass-through and command control.
- * Local HDMI loop output on transmitter.
- * Stable 24/7 operation.
- * Lightning protection, surge protection, ESD protection.

LKV752



1080P@60Hz HDMI over 1G IP Optical Extender

- * ipcolor STREAM™: Medium-compression AV, low latency.
- * Supports up to 1080P@60Hz/1920x1200 resolution.
- * Transmission Distance: 40km over LC single-mode fiber, 300m over LC multi-mode fiber.
- * One to One | One to Many | Switches Cascade(1Gb switch).
- * IR pass-back(20~60KHz).
- * RS-232 pass-through and command control.
- * Local HDMI loop output on transmitter.
- * Audio Embedding & Extraction: 3.5mm L/R.
- * Stable 24/7 operation.
- * Lightning protection, surge protection, ESD protection.

LKV982



4K@60Hz HDMI over 1G IP Optical Extender

- * ipcolor STREAM™: Medium-compression AV, low latency.
- * Supports up to 4K60 resolution.
- * Transmission Distance: 40km over LC single-mode fiber, 300m over LC multi-mode fiber.
- * One to One | One to Many | Switches Cascade(1Gb switch).
- * IR pass-back(20~60KHz).
- * RS-232 pass-through and command control.
- * Local HDMI loop output on transmitter.
- * Audio Embedding & Extraction: 3.5mm L/R.
- * Stable 24/7 operation.
- * Lightning protection, surge protection, ESD protection.

LKV993-V3.0



4K@60Hz Uncompressed HDMI over 10G IP Optical Extender

- * ipcolor PIXEL™: Uncompressed AV, ultra-low latency(<8ms).
- * Supports up to 4K60 resolution.
- * Transmission Distance: 40km over LC single-mode fiber, 300m over LC multi-mode fiber.
- * Unlimited Multi-receiver Cascade, no need 10G switch.
- * One to One | One to Many | Switches Cascade(10Gb switch).
- * Dolby Vision | HDR | HDR10.
- * HDMI Audio Extraction via S/PDIF.
- * Digital Audio Formats | CEC & ARC | EDID.
- * Bi-directional IR pass-back(20~60KHz).
- * RS-232 pass-through and command control.
- * Local HDMI loop output on transmitter.
- * Stable 24/7 operation.
- * Lightning protection, surge protection, ESD protection.



02.

KVM SERIES

LENKENG KVM solutions are designed for transmitting keyboard and mouse data via network cable, easy to control destination screens remotely.

LKV372KVM-P



70M HDMI KVM Extender over CAT6/6A/7

- * Zero-latency transmission.
- * Supports up to 4K@30Hz resolution.
- * Transmission Distance: 40m(4K@30Hz) or 70m(1080P@60Hz) over CAT6/6A/7.
- * Supports KVM transmitting keyboard and mouse data via LAN cable, easy to control computers, NVRs or other media players remotely.
- * HDR10.
- * Audio formats supported: PCM, LPCM, DTS HD, DTS Audio.
- * Lightning protection, surge protection, ESD protection.
- * PoC(Power over Cable) is available, only TX power supply is needed.

LKV565KVM-P



60M HDMI KVM Extender over CAT6/6A/7

- * ipcolor IMAGE™: Visually-lossless AV, ultra-low latency(< 16ms).
- * Supports up to 4K@60Hz resolution.
- * Transmission Distance: 60m over CAT6/6A/7.
- * Supports KVM transmitting keyboard and mouse data via LAN cable, easy to control computers, NVRs or other media players remotely.
- * HDR10 | EDID pass-through and auto down-scaling.
- * Local HDMI loop output on transmitter.
- * Audio Extraction: 3.5mm L/R on Receiver.
- * Ultra widescreen resolutions supported: 3440x1440, 2560x1440, 2560x1080, 2048x1080, 1920x1440, 1920x1200.
- * Audio formats supported: LPCM, DTS-Audio, Dolby Digital, Dolby Atmos.
- * PoC(Power over Cable), only Transmitter power supply is needed.
- * Lightning protection, surge protection, ESD protection.

LKV676KVM-PI



4K@60Hz 70M HDMI KVM Extender with PoC

- * Zero-latency transmission.
- * Supports up to 4K@60Hz resolution.
- * Transmission Distance: 70m over CAT6/6A/7.
- * Supports KVM transmitting keyboard and mouse data via LAN cable, easy to control computers, NVRs or other media players remotely.
- * HDR10 | EDID pass-through and auto down-scaling.
- * Local HDMI loop output on Transmitter.
- * Audio Extraction: S/PDIF on Receiver.
- * Audio formats supported: LPCM, DTS-HD, DTS-Audio, Dolby Digital 5.1CH, Dolby Atmos.
- * PoC(Power over Cable), only Transmitter power supply is needed.
- * Lightning protection, surge protection, ESD protection.

LKV373E-KVM-5.0



1080P@60Hz over IP KVM Extender, Touch Screen Support

- * Supports up to 1080P@60Hz/1920x1200 resolution.
- * Transmission Distance : 120m over CAT6/6A/7, 100m over CAT5e, 80m over CAT5.
- * Supports KVM transmitting keyboard, mouse and touch screen control data via LAN cable, easy to control computers, NVRs or other media players remotely.
- * One to One | One to Many | Switches Cascade(100Mbps switch).
- * Stable 24/7 operation.
- * Lightning protection, surge protection, ESD protection.

1080P@60Hz over IP KVM Extender, Touch Screen Support

- * Supports up to 1080P@60Hz/1920x1200 resolution.
- * Transmission Distance : 120m over CAT6/6A/7, 100m over CAT5e, 80m over CAT5.
- * Supports KVM transmitting keyboard, mouse and touch screen control data via LAN cable, easy to control computers, NVRs or other media players remotely.
- * One to One | One to Many | Switches Cascade(1Gb switch).
- * Stable 24/7 operation.
- * Lightning protection, surge protection, ESD protection.

LKV373KVM-5.0



LKV473KVM



4K@60Hz over IP KVM Extender, Touch Screen Support

- * Supports up to 4096x2160@60Hz/3840x2160@60Hz resolution.
- * Transmission Distance - One to One: 200m over CAT6/6A/7.
- * Transmission Distance - One to Many: 120m over CAT6/6A/7, 100m over CAT5e, 80m over CAT5.
- * Supports KVM transmitting keyboard, mouse and touch screen control data via LAN cable, easy to control computers, NVRs or other media players remotely.
- * One to One | One to Many | Switches Cascade(1Gb switch).
- * Stable 24/7 operation.
- * Lightning protection, surge protection, ESD protection.

LKV562KVM



Uncompressed 1080P@60Hz over 1G IP KVM Extender

- * ipcolor PIXEL™: Uncompressed AV, ultra-low latency(< 16ms).
- * Supports up to 1080P@60Hz/1920x1200 resolution.
- * Transmission Distance: 150m over CAT6/6A/7, 100m over CAT5e, 80m over CAT5.
- * One to One | One to Many | Switches Cascade(1Gb switch).
- * EDID pass-back.
- * IR Pass-back(20~60KHz).
- * Audio Extraction: 3.5mm L/R.
- * Stable 24/7 operation.
- * Lightning protection, surge protection, ESD protection.
- * POE(Power over Ethernet) is available.(LKV562KVM-POE)

LKV582KVM-USB2.0



4K@60Hz over 1G IP KVM Extender, Touch Screen/ USB flash drive/Camera Support

- * ipcolor STREAM: Medium-compression AV, low latency
- * Supports up to 4K@60 resolution.
- * Transmission Distance: 120m over CAT6/6A/7, 100m over CAT5e, 80m over CAT5.
- * Supports KVM transmitting keyboard, mouse, touch screen, USB flash drive and camera data via LAN cable, easy to control computers, NVRs or other media players remotely.
- * One to One | One to Many | Switches Cascade(1Gb switch).
- * RS-232 pass-through and command control.
- * Local HDMI loop output on transmitter.
- * Audio Embedding & Extraction: 3.5mm L/R.
- * Stable 24/7 operation.
- * Lightning protection, surge protection, ESD protection.

4K@60Hz Visually Lossless over 1G IP KVM Extender

- * ipcolor IMAGE™: Visually-lossless AV, ultra-low latency(< 16ms).
- * Supports up to 4096x2160@60Hz/3840x2160@60Hz resolution.
- * Transmission Distance: 120m over CAT6/6A/7, 80m over CAT5/5e.
- * Supports KVM transmitting keyboard and mouse data via LAN cable, easy to control computers, NVRs or other media players remotely.
- * One to One | One to Many | Switches Cascade(1Gb switch).
- * HDR10 | EDID.
- * HDMI Audio Extraction via S/PDIF.
- * RS-232 pass-through and command control.
- * Local HDMI loop output on transmitter.
- * Stable 24/7 operation.
- * Lightning protection, surge protection, ESD protection.

LKV592KVM-V2.0

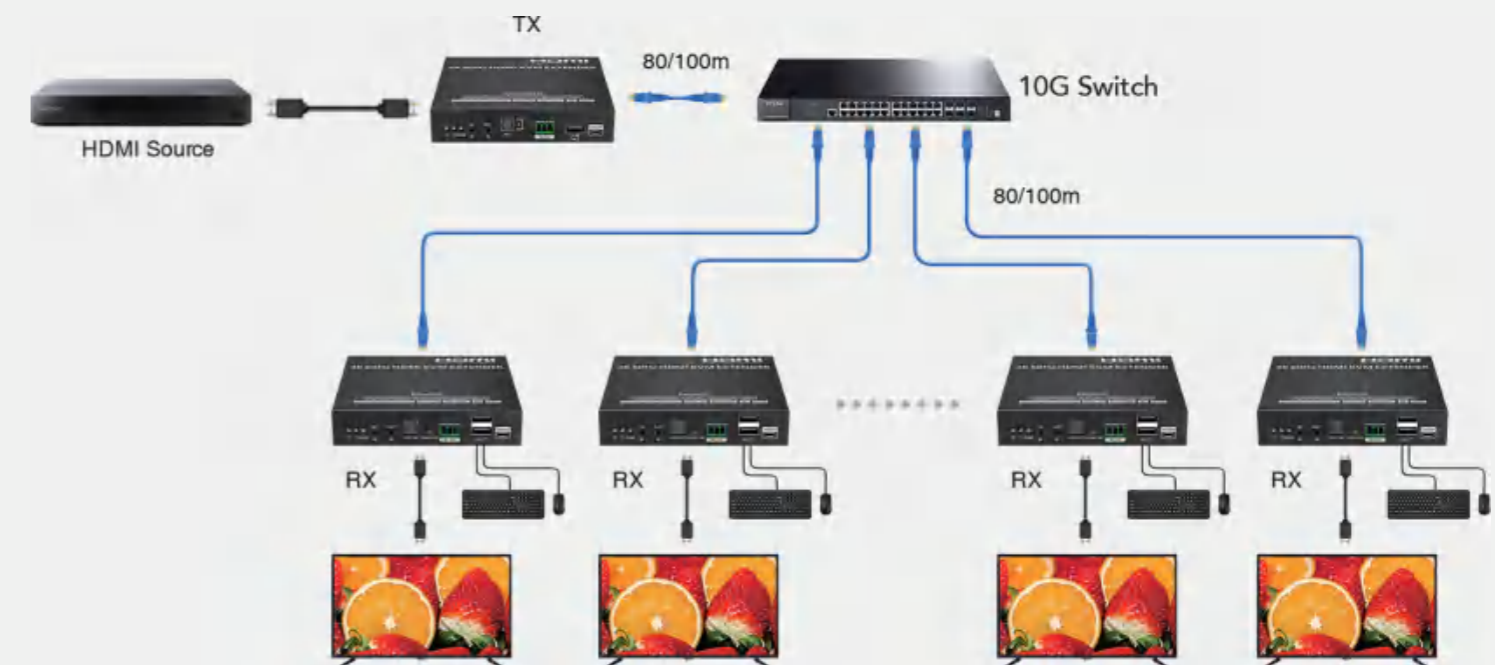


LKV593KVM-V3.0



4K@60Hz Uncompressed over IP KVM Extender with Receiver Cascade

- * ipcolor PIXEL™: Uncompressed AV, ultra-low latency(< 8ms).
- * Supports up to 4K60 resolution.
- * Transmission Distance: 100m over CAT6A/7, 80m over CAT6.
- * Unlimited Multi-receiver Cascade, no need 10G switch.
- * Supports KVM transmitting keyboard and mouse data via LAN cable, easy to control computers, NVRs or other media players remotely.
- * One to One | One to Many | Switches Cascade(10Gb switch).
- * Dolby Vision | HDR | HDR10.
- * HDMI Audio Extraction via S/PDIF.
- * CEC & ARC | EDID.
- * Bi-directional IR pass-back(20~60KHz).
- * RS-232 pass-through and command control.
- * Local HDMI loop output on transmitter.
- * Stable 24/7 operation.
- * Lightning protection, surge protection, ESD protection.



LKV752KVM



1080P@60Hz Uncompressed over 1G IP Optical KVM Extender

- * ipcolor STREAM™: Medium-compression AV, low latency.
- * Supports up to 1080P@60Hz/1920x1200 resolution.
- * Transmission Distance: 40km over LC single-mode fiber, 300m over LC multi-mode fiber.
- * Supports KVM transmitting keyboard, mouse and touch screen control data via optical fiber, easy to control computers, NVRs or other media players remotely.
- * One to One | One to Many | Switches Cascade(1Gb switch).
- * RS-232 pass-through and command control.
- * Local HDMI loop output on transmitter.
- * Audio Embedding & Extraction: 3.5mm L/R.
- * Stable 24/7 operation.
- * Lightning protection, surge protection, ESD protection.

LKV762KVM



1080P@60Hz Uncompressed over 1G IP Optical KVM Extender

- * ipcolor PIXEL™: Uncompressed AV, ultra-low latency(< 16ms).
- * Supports up to 1080P@60Hz/1920x1200 resolution.
- * Transmission Distance: 40km over LC single-mode fiber, 300m over LC multi-mode fiber.
- * Supports KVM transmitting keyboard, mouse and touch screen control data via optical fiber, easy to control computers, NVRs or other media players remotely.
- * One to One | One to Many | Switches Cascade(1Gb switch).
- * HDR10 compatible.
- * EDID pass-back.
- * RS-232 pass-through and command control.
- * Local HDMI loop output on transmitter.
- * Audio Embedding: 3.5mm L/R | Audio Extraction: 3.5mm L/R, S/PDIF.
- * Stable 24/7 operation.
- * Lightning protection, surge protection, ESD protection.

LKV982KVM



4K@60Hz HDMI over 1G IP Optical KVM Extender

- * ipcolor STREAM™: Medium-compression AV, low latency.
- * Supports up to 4K60 resolution.
- * Transmission Distance: 40km over LC single-mode fiber, 300m over LC multi-mode fiber.
- * Supports KVM transmitting keyboard, mouse and touch screen control data via optical fiber, easy to control computers, NVRs or other media players remotely.
- * One to One | One to Many | Switches Cascade(1Gb switch).
- * RS-232 pass-through and command control.
- * Local HDMI loop output on transmitter.
- * Audio Embedding & Extraction: 3.5mm L/R.
- * Stable 24/7 operation.
- * Lightning protection, surge protection, ESD protection.

LKV993KVM-V3.0



4K@60Hz Uncompressed over 10G IP Optical KVM Extender

- * ipcolor PIXEL™: Uncompressed AV, ultra-low latency(< 8ms).
- * Supports up to 4K60 resolution.
- * Transmission Distance: 40km over LC single-mode fiber, 300m over LC multi-mode fiber.
- * Unlimited Multi-receiver Cascade, no need 10G switch.
- * Supports KVM transmitting keyboard, mouse and touch screen control data via optical fiber, easy to control computers, NVRs or other media players remotely.
- * One to One | One to Many | Switches Cascade(10Gb switch).
- * Dolby Vision | HDR | HDR10.
- * HDMI Audio Extraction via S/PDIF.
- * Digital Audio Formats | CEC & ARC | EDID.
- * Bi-directional IR pass-back(20~60KHz).
- * RS-232 pass-through and command control.
- * Local HDMI loop output on transmitter.
- * Stable 24/7 operation.
- * Lightning protection, surge protection, ESD protection.

03.

USB EXTENDER

Lenkeng's 4-port USB2.0 and USB3.0 extenders kits extend USB signals over Ethernet cable up to 100 meters.

They are ideal for home office, gaming, home surveillance, live streaming, video conferencing, etc.

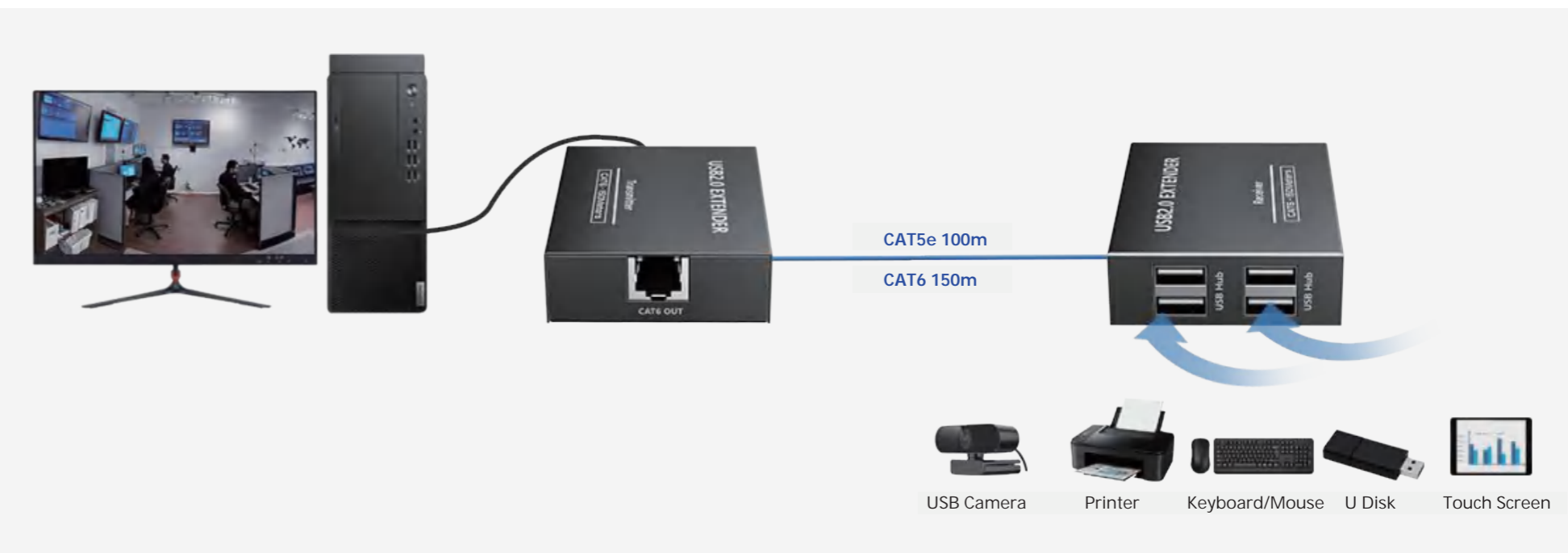


LKV100USB



150M 4 Ports High-speed USB2.0 Extender

- * Inputs: 4 x USB 2.0 | Outputs: 1 x USB 2.0.
- * Transmission Distance: 150m over CAT6/6A/7, 100m over CAT5e, also supports switch connection for double distance.
- * Supports all USB 2.0 devices up to 60Mbps.
- * Supports USB 2.0 High-Speed, Compatible with USB 1.1 Full-Speed, USB1.0 Low-Speed.
- * Supports USB hub connection for more peripheral devices.
- * The transmitter is powered by the source device directly, no additional power supply is required.
- * Major operating systems supported: Windows, MacOS, Linux , Android.



LKV300USB



USB3.2 5Gbps Super-speed 4-ports 100M Extender

- * Inputs: 4 x USB 3.0 | Outputs: 1 x USB 3.0.
- * Transmission Distance: 100m over CAT6A/7, 50m over CAT6.
- * The Transmitter supports USB 3.0 Super-Speed, compatible with USB 3.2 Gen1x1, USB 3.1 Gen1.Gen1;
- * The Receiver supports USB 3.0 Super-Speed, USB 2.0 High-Speed, compatible with USB 1.1 Full-Speed.
- * Support USB hub connection.
- * PoC(Power over Cable) is available, only RX power supply is needed.
- * Supports hot-plugging of USB devices and automatically identify USB standards.
- * Stable 24/7 operation.
- * Lightning protection, surge protection, ESD protection.

LKV300USB-RS



USB3.2 5Gbps Super-speed 4-ports 100M Extender with RS-232, Frame Sync, PoC

- * Inputs: 4 x USB 3.0 | Outputs: 1 x USB 3.0.
- * Transmission Distance: 100m over CAT6A/7, 50m over CAT6.
- * The Transmitter supports USB 3.0 Super-Speed, compatible with USB 3.2 Gen1x1, USB 3.1 Gen1;
- * The Receiver supports USB 3.0 Super-Speed, USB 2.0 High-Speed, compatible with USB 1.1 Full-Speed.
- * Supports RS-232 and frame synchronization.
- * Supports USB hub connection.
- * PoC(Power over Cable) is available, only RX power supply is needed.
- * Supports hot-plugging of USB devices and automatically identify USB standards.
- * Stable 24/7 operation.
- * Lightning protection, surge protection, ESD protection.

LKV320USB-MMF-V3.0



USB3.2 5Gbps Super-speed 4-ports 300M Dual-mode Optical Extender

- * Input: 4 x USB3.0 | Output: 1 x USB3.0
- * Transmission Distance:300m over LC dual-mode optical fiber
- * The Transmitter supports USB3.0 Super-speed,compatible with USB3.2 Gen1,USB3.1 Gen1
- * The Receiver supports USB3.0 Super-speed,compatible with USB3.2 Gen1,USB3.1 Gen1,USB2.0,USB1.1,USB1.0
- * Supports USB hub connection for more peripheral devices.
- * The transmitter is powered by the source device directly,no additional power supply is required.
- * Supports hot-plugging of USB devices and automatically identify USB standards.
- * Stable 24/7 operation.
- * Lightning protection,surge protection,ESD protection

LKV320USB-SMF-V3.0



USB3.2 5Gbps Super-speed 4-ports 300M Single-mode Optical Extender

- * Input: 4 x USB3.0 | Output: 1 x USB3.0
- * Transmission Distance:300m over LC single-mode optical fiber.
- * The Transmitter supports USB3.0 Super-speed,compatible with USB3.2 Gen1,USB3.1 Gen1.
- * The Receiver supports USB3.0 Super-speed,compatible with USB3.2 Gen1,USB3.1 Gen1,USB2.0,USB1.1,USB1.0.
- * Supports USB hub connection for more peripheral devices.
- * The transmitter is powered by the source device directly,no additional power supply is required.
- * Supports hot-plugging of USB devices and automatically identify USB standards.
- * Stable 24/7 operation.
- * Lightning protection,surge protection,ESD protection.

04.

WIRELESS SERIES

Free your hands and reduce wiring costs while still enjoying a high-definition, smooth audio and visual experience.



Point-to-Point Wireless Extender

LKV433Mini



1080P@60Hz Mini Wireless HDMI Extender

- * High definition and low-latency transmission.
- * Supports up to 1920x1200/1920x1080@60Hz resolution.
- * Transmission Distance(line of sight): 20m.
- * In case of multiple sets of products in the same area, support SSID pairing and channel switching to avoid interference.
- * 5GHz wireless frequency, anti-interference.
- * Portable design, plug and play.
- * Stable 24/7 operation.
- * Lightning protection, surge protection, ESD protection.

LKV466Mini



4K@30Hz Mini Wireless HDMI Extender

- * High definition and low-latency transmission.
- * Supports up to 4096x2160@30Hz resolution.
- * Transmission Distance(line of sight): 20m.
- * In case of multiple sets of products in the same area, support SSID pairing and channel switching to avoid interference.
- * 5GHz wireless frequency, anti-interference.
- * Portable design, plug and play.
- * Stable 24/7 operation.
- * Lightning protection, surge protection, ESD protection.

LKV488Mini-V2.0/LKV477Mini-V2.0/ LKV455Mini-V2.0



4K@60Hz / 4K@30Hz / 1080P@60Hz Mini Wireless HDMI Extender

- * ipcolor STREAM™: Medium-compression AV, low latency.
- * Supports up to 16-to-1 transmission.
- * Maximum resolution: 4096x2160/3840x2160@60Hz. (LKV488Mini-V2.0)
- * Maximum resolution: 4096x2160/3840x2160@30Hz.(LKV477Mini-V2.0)
- * Maximum resolution: 1920x1200/1920x1080@60Hz.(LKV455Mini-V2.0)
- * Transmission Distance(line of sight): 20m.
- * In case of multiple sets of products in the same area, support SSID pairing and channel switching to avoid interference.
- * 5GHz wireless frequency, strong anti-interference.
- * Portable design, plug and play.
- * Stable 24/7 operation.
- * Lightning protection, surge protection, ESD protection.

4K@60Hz / 4K@30Hz / 1080P@60Hz Mini Wireless Type-C to HDMI Extender

- * ipcolor STREAM™: Medium-compression AV, low latency.
- * Supports up to 16-to-1 transmission.
- * Inputs: Type-C | Outputs: HDMI.
- * Maximum resolution: 4096x2160/3840x2160@60Hz. (LKV488TypeC-V2.0)
- * Maximum resolution: 4096x2160/3840x2160@30Hz.(LKV477TypeC-V2.0)
- * Maximum resolution: 1920x1200/1920x1080@60Hz.(LKV455TypeC-V2.0)
- * Transmission Distance(line of sight): 20m.
- * In case of multiple sets of products in the same area, support SSID pairing and channel switching to avoid interference.
- * 5GHz wireless frequency, strong anti-interference.
- * Portable design, plug and play.
- * Stable 24/7 operation.
- * Lightning protection, surge protection, ESD protection.

LKV488TypeC-V2.0/LKV477TypeC-V2.0/LKV455TypeC-V2.0



LKV699E



1TX-to-4RXs 4K@60Hz Wireless HDMI Extender

- * ipcolor STREAM™: Medium-compression AV, low latency.
- * Maximum resolution: 4096x2160/3840x2160@60Hz.
- * Supports up to 1-to-4 wireless transmission.
- * Transmission Distance(line of sight): 1-to-1: 50m, 1-to-2:30m, 1-to-3: 20m, 1-to-4: 15m.
- * Local HDMI loop output on transmitter.
- * In case of multiple sets of products in the same area, support SSID pairing and channel switching to avoid interference.
- * IR pass-back(20~60KHz).
- * 5GHz wireless frequency, strong anti-interference.
- * Stable 24/7 operation.
- * Lightning protection, surge protection, ESD protection.

LKV677-V2.0/LKV655-V2.0



1TX-to-4RXs 4K@30Hz / 1080P@60Hz Wireless HDMI Extender

- * ipcolor STREAM™: Medium-compression AV, low latency.
- * Maximum resolution: 4096x2160/3840x2160@30Hz.(LKV677-V2.0)
- * Maximum resolution: 1920x1200/1920x1080@60Hz.(LKV655-V2.0)
- * Supports up to 1-to-4 wireless transmission.
- * Transmission Distance(line of sight): 1-to-1: 50m, 1-to-2:30m, 1-to-3: 20m, 1-to-4: 15m.
- * Local HDMI loop output on transmitter.
- * In case of multiple sets of products in the same area, support SSID pairing and channel switching to avoid interference.
- * IR pass-back(20~60KHz).
- * 5GHz wireless frequency, strong anti-interference.
- * Stable 24/7 operation.
- * Lightning protection, surge protection, ESD protection.

LKV899(Wi-Fi 7)



Ultra-low Latency 4K@60Hz 20M Wireless HDMI Extender

- * Ultra-low latency(<16ms).
- * Supports up to 4096x2160/3840x2160@60Hz resolution.
- * Transmission Distance(line of sight): 20m.
- * HDMI Audio Extraction via S/PDIF.
- * Local HDMI loop output on transmitter.
- * Uni-directional IR pass-back(20~60KHz).
- * WIFI 7 wireless frequency, strong anti-interference.
- * Stable 24/7 operation.
- * Lightning protection, surge protection, ESD protection.



LKV655E-KVM-V2.0 / LKV677E-KVM-V2.0 / LKV699E-KVM-V2.0



1TX-to-4RXs 4K@60Hz Wireless KVM Extender

- * ipcolor STREAM™: Medium-compression AV, low latency.
- * Supports up to 4096x2160/3840x2160@60Hz resolution.(LKV699E-KVM-V2.0)
- * Supports up to 1-to-4 wireless transmission.
- * Transmission Distance(line of sight): 1-to-1: 50m, 1-to-2:30m, 1-to-3: 20m, 1-to-4: 15m.
- * Supports KVM transmitting keyboard and mouse data wirelessly, easy to control computers, NVRs or other media players remotely.
- * Local HDMI loop output on transmitter.
- * In case of multiple sets of products in the same area, support SSID pairing and channel switching to avoid interference.
- * IR pass-back(20~60KHz).
- * 5GHz wireless frequency, strong anti-interference.
- * Stable 24/7 operation.
- * 4096x2160/3840x2160@30Hz is available.(LKV677E-KVM-V2.0)
- * 1920x1200/1920x1080@60Hz is available.(LKV655E-KVM-V2.0)

LKV655KVM-V2.0 / LKV677KVM-V2.0 / LKV699KVM-V2.0



1TX-to-4RXs 4K@60Hz Wireless KVM Extender

- * ipcolor STREAM™: Medium-compression AV, low latency.
- * Supports up to 4096x2160/3840x2160@60Hz resolution.(LKV699KVM-V2.0)
- * Supports up to 1-to-4 wireless transmission.
- * Transmission Distance(line of sight): 1-to-1: 50m, 1-to-2:30m, 1-to-3: 20m, 1-to-4: 15m.
- * Supports KVM transmitting keyboard and mouse data wirelessly, easy to control computers, NVRs or other media players remotely.
- * Local HDMI loop output on transmitter.
- * In case of multiple sets of products in the same area, support SSID pairing and channel switching to avoid interference.
- * IR pass-back(20~60KHz).
- * 5GHz wireless frequency, strong anti-interference.
- * Stable 24/7 operation.
- * Lightning protection, surge protection, ESD protection.
- * 4096x2160/3840x2160@30Hz is available.(LKV677KVM-V2.0)
- * 1920x1200/1920x1080@60Hz is available.(LKV655KVM-V2.0)

LKV799-V2.0(60G)



Ultra-low Latency 4K@60Hz Wireless 60G HDMI Extender

- * ipcolor IMAGE™: Visually-lossless AV, ultra-low latency(< 16ms).
- * Supports 60G wireless frequency bands, strong anti-interference.
- * Supports up to 4096x2160/3840x2160@60Hz resolution.
- * Transmission Distance(line of sight): 20m.
- * Dolby Vision | HDR10 | YUV4:4:4.
- * Digital Audio Formats: LPCM 5.1CH/DTS-Audio/Dolby Digital 5.1CH.
- * Local HDMI loop output on transmitter.
- * Bi-directional IR pass-back(20~60KHz).
- * Stable 24/7 operation.
- * Lightning protection, surge protection, ESD protection.

LKV899KVM(Wi-Fi 7)



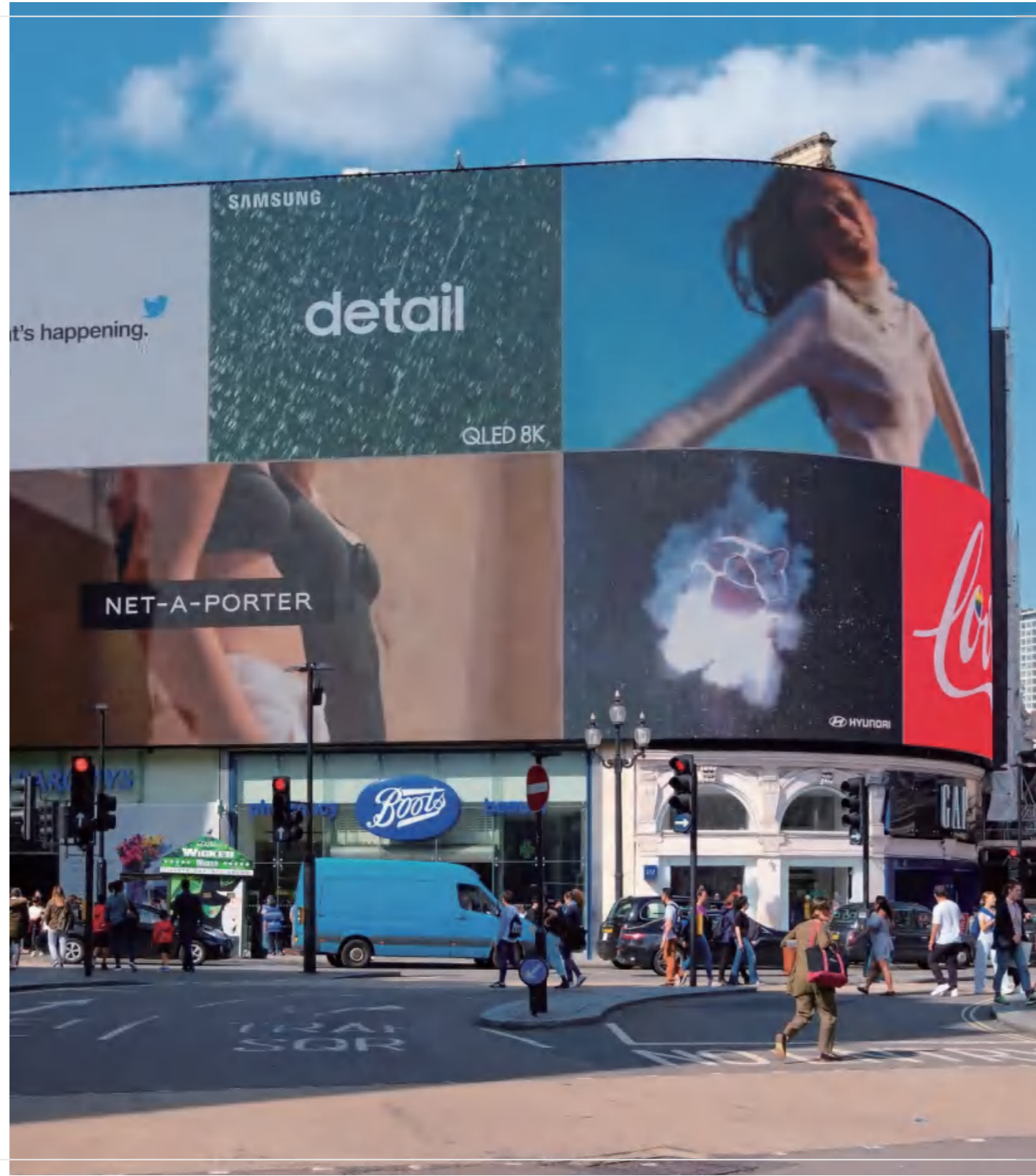
Ultra-low Latency 4K@60Hz Wireless KVM HDMI Extender

- * Ultra-low latency(< 16ms).
- * Supports KVM transmitting keyboard and mouse data wirelessly, easy to control computers, NVRs or other media players remotely.
- * Supports up to 4096x2160/3840x2160@60Hz resolution.
- * Transmission Distance(line of sight): 20m.
- * Local HDMI loop output on transmitter.
- * Uni-directional IR pass-back(20~60KHz).
- * WIFI 7 wireless frequency, strong anti-interference.
- * Stable 24/7 operation.
- * Lightning protection, surge protection, ESD protection.

05.

VIDEO SIGNAL PROCESSING

Apply HDMI signal processing to create video wall, multiview, splitter or switcher.



LKV104VW



1920x1080@60Hz 2x2 Video Wall

- * Inputs: 1 x HDMI | Outputs: 4 x HDMI.
- * Both HDMI input and output support up to 1920x1200@60Hz (1920x1080@60Hz).
- * Splicing modes: 1x1/1x2/1x3/1x4/2x2, etc.
- * 180-degree image rotation to reduce LCD splicing gap(only available in 2x2 mode).
- * Modes switch: RS-232, dip switch control.
- * 3.5mm L/R audio output.
- * Lightning protection, surge protection, ESD protection.

LKV104VW-V2.0



4K@60Hz 2x2 Video Wall

- * Inputs: 1 x HDMI | Outputs: 4 x HDMI.
- * Max. input resolution: 3840x2160@60Hz.
- * Max. resolution(single output): 1920x1200@60Hz (1920x1080@60Hz).
- * Max. resolution(total output): 3840x2160@60Hz(2x2).
- * Splicing modes: 1x1/1x2/1x3/1x4/2x2, etc.
- * 180-degree image rotation to reduce LCD splicing gap(only available in 2x2 mode).
- * Modes switch: RS-232, dip switch control.
- * 3.5mm L/R audio output.
- * Lightning protection, surge protection, ESD protection.

LKV109VW-V2.0



4K@60Hz 3x3 Video Wall

- * Inputs: 1 x HDMI | Outputs: 9 x HDMI.
- * Max. input resolution: 4096x2160@60Hz.
- * Max. resolution(single output): 1920x1200@60Hz (1920x1080@60Hz).
- * Max. resolution(total output): 5760x3240@60Hz(3x3).
- * Splicing modes: 1x2, 1x3, 1x4, 2x2, 2x3, 3x2, 2x4, 4x2, and 3x3.
- * Modes switch: RS-232, dip switch control.
- * Audio output: 3.5mm audio output PCM.
- * 180-degree image rotation: to reduce LCD splicing gap (only available when using 2x2/2x3/2x4 modes.)
- * Lightning protection, surge protection, ESD protection.

LKV144VW



4K@60Hz 2x2 Video Wall

- * Inputs: 1 x HDMI | Outputs: 4 x HDMI.
- * Max. input resolution: 3840x2160@60Hz.
- * Max. resolution(single output): 3840x2160@60Hz.
- * Max. resolution(total output): 7680x4320@60Hz(2x2).
- * Splicing modes: 1x2, 1x3, 1x4, 2x2, 2x3, 3x2, 2x4, 4x2, and 3x3.
- * Modes switch: RS-232, dip switch control.
- * Audio output: 3.5mm audio output PCM.
- * 180-degree image rotation: to reduce LCD splicing gap (only available when using 2x2/2x3/2x4 modes.)
- * Lightning protection, surge protection, ESD protection.

LKV592VW



4K@60Hz Visually Lossless HDMI over 1G IP Extender with Video Wall

- * ipcolor IMAGE™: Visually-lossless AV, ultra-low latency(< 16ms).
- * Supports up to 4096x2160@60Hz resolution.
- * Create 4x4 Video Wall with 16 Receivers.
- * Transmission Distance: 120m over CAT6/6A/7, 80m over CAT5/5e.
- * One to One | One to Many | Switches Cascade(1Gb switch).
- * HDR10 compatible.
- * Digital Audio Formats | CEC & ARC | EDID.
- * HDMI Audio Extraction via S/PDIF.
- * Bi-directional IR pass-back(20~60KHz).
- * RS-232 pass-through and command control.
- * Local HDMI loop output on transmitter.
- * Lightning protection, surge protection, ESD protection.

LKV401MV-V2.0



1080P@60Hz HDMI 4x1 Quad Multiviewer Switcher

- * Inputs: 4 x HDMI | Outputs: 1 x HDMI.
- * Supports up to 1080P@60Hz/1920x1200 resolution.
- * Multiview modes: full, dual and quad modes.
- * Modes switch: panel button, IR remote control.
- * Stable 24/7 operation.
- * Lightning protection, surge protection, ESD protection

LKV401MV-4K@60Hz-V2.0



4K@60Hz HDMI 4x1 Quad Multiviewer Switcher

- * Inputs: 4 x HDMI | Outputs: 1 x HDMI.
- * Supports up to 4K@60Hz resolution.
- * Multiview modes: full, dual and quad modes.
- * Modes switch: panel button, IR remote control.
- * Stable 24/7 operation.
- * Lightning protection, surge protection, ESD protection.

06. SWITCHER

As the era of digital and high-definition video unfolds, switching solutions free up space and deliver affordable hardware as well as lower - operating and maintenance costs.



LKV841



8K HDMI Switch 4x1

- * Inputs: 4 x HDMI | Outputs: 1 x HDMI.
- * Supports up to 8K@60Hz/4K@120Hz/1080P@240Hz/5120x1440@120Hz resolution.
- * Max. transmission rate: 48Gbps.
- * Dolby Vision | HDR | HDR10 | HLG | YUV4:4:4.
- * VRR | Free Sync | G-Sync | HDMI CEC | 3D | HDMI 2.1 | HDCP2.3.
- * HDMI Audio Extraction via S/PDIF.
- * EDID Management: Auto down-scaling 8K video input to 4K/1080P output when the display only supports up to 4K/1080P; also supports to down scales 4K video input to a 1080P output.
- * Audio formats supported: Dolby Atmos, Dolby Digital 7.1CH, Dolby True HD, DTS:X, DTS-HD, LPCM 7.1CH, etc.

LKV844



4K@60Hz 4x4 HDMI Matrix Switch Extender

- * Inputs: 4 x HDMI | Outputs: 4 x HDMI | Loop-out: 4 x HDMI.
- * Supports up to 4K@60Hz resolution.
- * Transmission Distance: 70m.
- * Digital Audio Extraction via the Receiver S/PDIF port.
- * IR pass-back (20~60kHz).
- * PoC(Power over Cable) is available, only TX power supply is needed.
- * Intelligent EDID management.
- * Control Methods: Panel button | Remote control | Ethernet control | RS-232 control.
- * Lightning protection, surge protection, ESD protection.

LKV441



4K@60Hz HDR 4x1 KVM Switch

- * Inputs: 4xHDMI | Outputs: 1 x HDMI.
- * Supports up to 4096x2160@60Hz resolution.
- * USB2.0 KVM Switch: Supports one set of keyboard and mouse to control 4 computers and share 1monitor.
- * HDR10 | EDID pass-through and auto down-scaling.
- * Modes switch: panel button, IR remote control, RS-232 Control.
- * Audio formats supported: LPCM7.1, DTS-HD, DTS-Audio, Dolby Digital plus,Dolby TrueHD 7.1, Dolby Digital, Dolby Atmos.
- * Major operating systems supported: Window, Mac OS, Android, Chrome and so on,

LKV441EX



4K@60Hz HDR 4x1 HDMI KVM Switch Extender

- * Inputs: 4 x HDMI | Outputs: 1 x HDMI.
- * Supports up to 4K60 resolution.
- * Transmission Distance: 70m over CAT6/6A/7.
- * USB2.0 KVM Switch: Supports one set of keyboard and mouse to control 4 computers and share 1monitor.
- * HDR10 | EDID pass-through and auto down-scaling.
- * Modes switch: panel button, IR remote control, RS-232 Control.
- * Audio formats supported: LPCM7.1, DTS-HD, DTS-Audio, Dolby Digital plus, Dolby TrueHD 7.1, Dolby Digital, Dolby Atmos.
- * Major operating systems supported: Window, Mac OS, Android, Chrome and so on.

LKV422



4x2 HDMI Matrix Switch

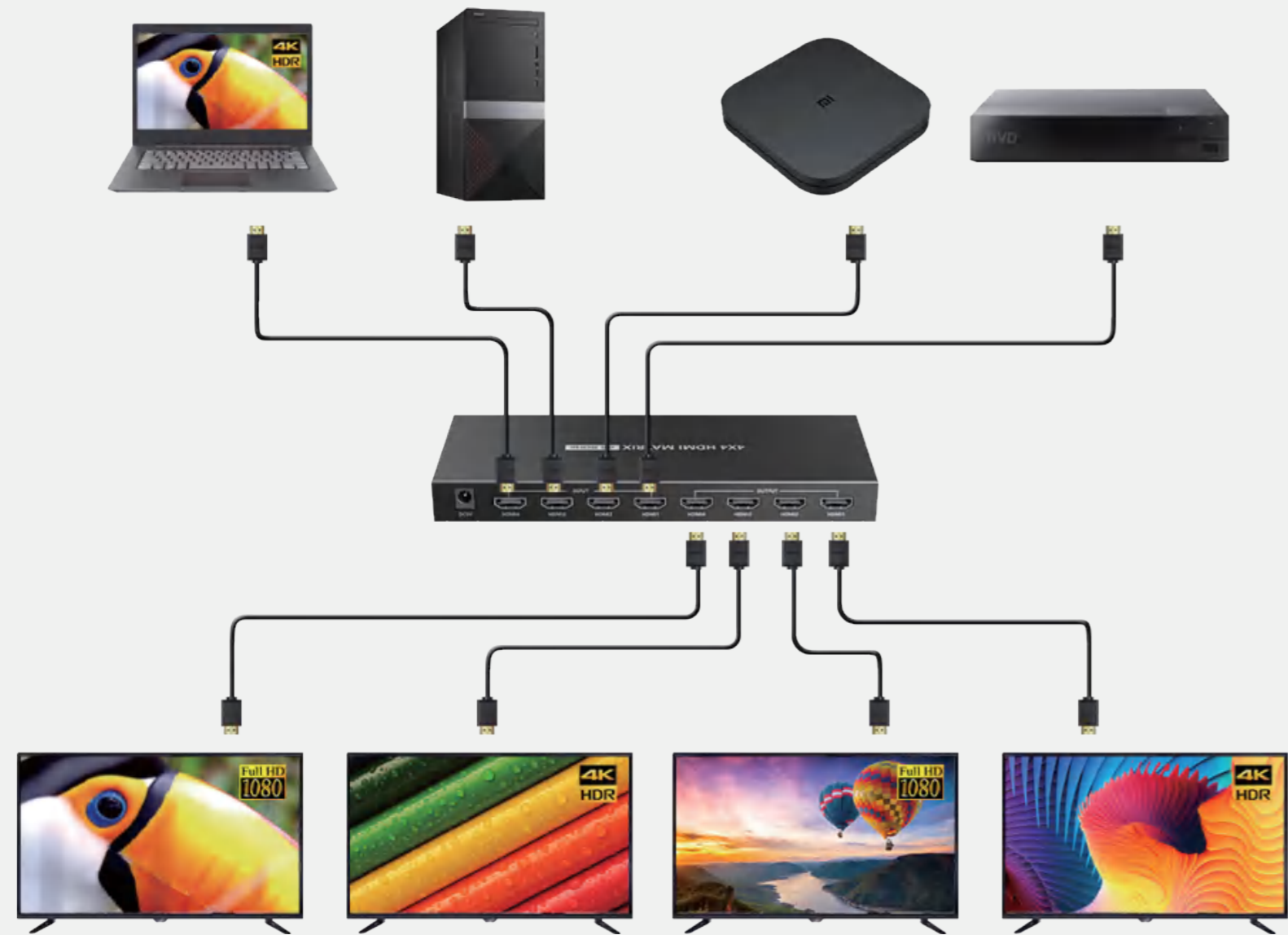
- * Supports 4 HDMI input and 2 HDMI output.
- * Supports up to 4096x2160@60Hz resolution and is backward compatible.
- * Supports HDR10.
- * Supports multiple switching mode: IR remote control, buttons, RS-232.
- * Supports additional audio output from stereo jack and S/PDIF port.
- *HDMI outputs support auto down-scaling.
- * Lightning protection, surge protection, ESD protection.

LKV424



4x4 HDMI Matrix Switch

- * Supports 4 HDMI input signals and 4 HDMI output signals.
- * Supports up to 4096x2160@60Hz resolution and is backward compatible.
- * Supports HDR10.
- * Supports multiple switching mode: IR remote control, buttons, RS232.
- * Supports setting the EDID of the product.
- * Any two of the four HDMI outputs support Auto Down-scaling
- * Lightning protection, surge protection, ESD protection.



07.

Splitter

When you need to mirror one image or signal to many displays in real time, without buying extra source devices, sacrificing quality, or adding cable length, a splitter is the most economical and reliable solution.

LKV862 | LKV864



8K HDMI Splitter 1x2/ 1x4

- * Inputs: 1 x HDMI | Outputs: 2/4 x HDMI.
- * Supports up to 8K@60Hz/4K@120Hz/1080P@240Hz/5120x1440@120Hz resolution.
- * Max. transmission rate: 48Gbps.
- * Dolby Vision | HDR | HDR10 | HLG | YUV4:4:4.
- * VRR | Free Sync | G-Sync | HDMI CEC | 3D | HDMI 2.1 | HDCP2.3.
- * HDMI Audio Extraction via S/PDIF.
- * EDID Management: Auto down-scaling 8K video input to 4K/1080P output when the display only supports up to 4K/1080P; also supports to down scales 4K video input to a 1080P output.
- * Audio formats supported: Dolby Atmos, Dolby Digital 7.1CH, Dolby True HD, DTS:X, DTS-HD, LPCM 7.1CH, etc.

LKV312EDID-V3.0 | LKV314EDID-V3.0 | LKV318EDID-V3.0



4K@60Hz 1x2 | 1x4 | 1x8 HDMI Splitter

- * Distribute 1 HDMI source to 2 HDMI displays (LKV312EDID-V3.0)
- * Distribute 1 HDMI source to 4 HDMI displays (LKV314EDID-V3.0)
- * Distribute 1 HDMI source to 8 HDMI displays (LKV318EDID-V3.0)
- * Supports ultra HD resolution 4Kx2K@60Hz.
- * Supports HDMI 3D.
- * Supports YUV 4:4:4.
- * Supports HDR.
- * HDMI 2.0 and HDCP2.2 compliant.
- * Low power consumption.
- * Supports configures the video resolution automatically according to the capabilities of each connected monitor, allows simultaneous mixed 4K and 1080p display outputs.
- * Plug and play.

LKV722P-N / LKV724P-N



4K@30Hz HDMI Splitter Extender 1x2 / 1x4

- * ipcolor IMAGE™: Visually-lossless AV, Zero Latency.
- * Inputs: 1 x HDMI | Outputs: 2 / 4 x HDMI.
- * Supports up to 4K60 HDR.
- * Transmission Distance: 40m(4K@30Hz) or 70m(1080P@60Hz) over CAT6/6A/7.
- * PoC(Power over Cable) is available.
- * IR pass-back(20~60KHz).
- * RS-232 pass-through and command control.
- * Supports EDID.
- * Local HDMI loop output on transmitter.
- * Lightning protection, surge protection, ESD protection.
- * Stable 24/7 operation.

LKV822P-N / LKV824P-N / LKV828P-N



4K@60Hz HDMI Splitter Extender 1x2 / 1x4 / 1x8

- * ipcolor IMAGE™: Visually-lossless AV, Zero Latency.
- * Inputs: 1 x HDMI | Outputs: 2 / 4 / 8 x HDMI.
- * Supports up to 4K60 resolution.
- * Transmission Distance: 70m over CAT6/6A/7.
- * PoC(Power over Cable) is available.
- * IR pass-back(20~60KHz).
- * RS-232 pass-through and command control.
- * Supports EDID.
- * Local HDMI loop output on transmitter.
- * Lightning protection, surge protection, ESD protection.
- * Audio Extraction: 3.5mm L/R.

LKV314-HDbitT-5.0/LKV318-HDbitT-5.0



1080P@60Hz HDMI Splitter with Extender

- * It splits one HDMI input signal to four identical network output signals. (LKV314-HDbitT-5.0)
- * It splits one HDMI input signal to eight identical network output signals. (LKV318-HDbitT-5.0)
- * Extend HDMI signal up to 120m over CAT5/5e/6 cable.
- * Supports full HD resolution 1080p@60Hz.
- * Supports cascade connection by switch or router.
- * Compatible with existing network, not affect internet.
- * Plug and play, use easily.
- * Convenient wall-mountable design.

LKV314-4K60Hz-HDbitT-5.0/LKV318-4K60Hz-HDbitT-5.0



4K@60Hz HDMI Splitter with Extender

- * It splits one HDMI input signal to four identical network output signals. (LKV314-4K60Hz-HDbitT-5.0)
- * It splits one HDMI input signal to eight identical network output signals. (LKV318-4K60Hz-HDbitT-5.0)
- * Extend HDMI signal up to 120m over CAT5/5e/6 cable.
- * Supports full HD resolution 1080p@60Hz.
- * Supports cascade connection by switch or router.
- * Compatible with existing network, not affect internet.
- * Plug and play, use easily.
- * Convenient wall-mountable design.



08.

Converter

With a wide variety of video interfaces available, an HDMI to DVB-T converter treats the HDMI signal as a genuine digital terrestrial channel for multi-point distribution.

LKV479P-DVB-T



1080P HDMI to DVB-T Modulator

- * Max input Resolution:1080P@60Hz | Max RF Output:1080P@30Hz
- * Metal housing, stable and durable.
- * Wall-mounted function,easy installation.
- * Strong anti-noise and anti-interference ability.
- * Support multiple modulators to be installed todistribute as many channels you need.
- * Distribute one source to multiple displays with one modulator via CATV splitter.
- * Support DVB-T digital high definition RF signal output.
- * Lightning protection, surge protection, ESD protection.

LKV579P-DVB-T



HDMI to DVB-T Modulator

- * Max input Resolution:4K@60Hz | Max RF Output: 4K@30Hz
- * Metal housing, stable and durable.
- * Wall-mounted function,easy installation.
- * Strong anti-noise and anti-interference ability.
- * Support multiple modulators to be installed todistribute as many channels you need.
- * Distribute one source to multiple displays with one modulator via CATV splitter.
- * Support DVB-T digital high definition RF signal output.
- * Lightning protection, surge protection, ESD protection.

LKV679P-DVB-T-V2.0



4K@60Hz HDMI to DVB-T Modulator

- * Max input Resolution:4K@60Hz | Max output Resolution:4K@30Hz.
- * Metal housing, stable and durable.
- * Wall-mounted function,easy installation.
- * Strong anti-noise and anti-interference ability.
- * Support multiple modulators to be installed todistribute as many channels you need.
- * Distribute one source to multiple displays with one modulator via CATV splitter.
- * Support DVB-T digital high definition RF signal output.
- * Lightning protection, surge protection, ESD protection.



09.

DIGITAL SIGNAGE SYSTEM

A digital signage system is an integrated, network-centric solution that combines hardware, software, and content services to create, schedule, distribute, and display multimedia messages on electronic screens (LCD, LED, OLED, projection, e-paper, etc.) in public or private spaces for information, advertising, or interactive engagement.

DSS02Dongle



4K@60Hz Most Easy-to-use Digital Signage Stick with APP Control

- * Supports 4K@60Hz ultra high-definition advertising.
- * Supports remote management and advertising distribution by APP
- * Supports multiple operating systems, such as Android, iOS, Windows, macOS, etc.
- * Supports insert a USB drive to play ads automatically in a loop.
- * Supports account management, facilitating the management of terminals.
- * Supports networking via WiFi.
- * Data encryption ensures security.
- * Stable 24/7 operation.

DSS02



4K@60Hz Most Easy-to-use Digital Signage System with APP Control

- * Supports 4K@60Hz ultra high-definition advertising.
- * Supports remote management and advertising distribution by APP.
- * Supports multiple operating systems, such as Android, iOS, Windows, macOS, etc.
- * Supports insert a USB drive to play ads automatically in a loop.
- * Supports account management, facilitating the management of terminals.
- * Supports dual-mode networking via WiFi and Ethernet.
- * Data encryption ensures security.
- * Stable 24/7 operation.

DSS02W



Non-subscription CMS and Totally Free Cloud Server Digital Signage System

- * Supports 4K@60Hz ultra high-definition advertising.
- * Supports remote management and advertising distribution by APP
- * Supports multiple operating systems, such as Android, iOS, Windows, macOS, etc.
- * Supports insert a USB drive to play ads automatically in a loop.
- * Supports account management, facilitating the management of terminals.
- * Supports dual-mode networking via WiFi and Ethernet.
- * Data encryption ensures security.
- * Stable 24/7 operation.

DSS02-4G



4K@60Hz Digital Signage Player with 4G SIM Card

- * Supports 4K@60Hz (3840*2160@60Hz) ultra-high-definition adverts playback
- * Supports remote management of equipment and advertisement release
- * Customising the playback duration of images
- * Customising the playback order of clips
- * Supports editing subtitles
- * Real-time monitoring of terminals to ensure stable playback
- * Supports USB2.0*2
- * Supports 3.5mm audio output
- * Supports Wi-Fi, 3G/4G, Ethernet
- * Supports inserting 4G card
- * Data encryption
- * Stable 24/7 operation.
- * Lightning protection, surge protection, ESD protection.

DSS03-8K



8K@60Hz Digital Signage Player

- * Supports 8K@60Hz (7680*4320@60Hz) ultra-high-definition adverts playback
- * Supports remote management of equipment and advertisement release
- * Customising the playback duration of images
- * Customising the playback order of clips
- * Supports editing subtitles
- * Real-time monitoring of terminals to ensure stable playback
- * Supports USB2.0*2
- * Supports 3.5mm audio output
- * supports Wi-Fi, 3G/4G, Ethernet
- * Data encryption
- * Stable 24/7 operation.
- * Lightning protection, surge protection, ESD protection.



10.

iPCOLOR MULTIMEDIA MANAGEMENT SYSTEM

Lenkeng AV over IP solution ipcolor Multimedia Control System offers plug-n-play and easy-to-use, quite friendly to all users. Unlock unparalleled flexibility with seamlessly compose multiview and video wall simultaneously for unlimited sharing and collaboration and cutting extra Receivers cost via ultra-easy APP control.

LKV373-M5.0



1080P@60Hz over IP Extender with Multi-view and APP Control

- * Supports up to 1920x1200@60Hz resolution.
- * Transmission Distance - One to Many: 120m over CAT6/6A/7, 100m over CAT5e, 80m over CAT5
- * One to One | One to Many | Many to Many | Switches Cascade(100Mbps switch).
- * Supports up to 2x2 Multiview.
- * The maximum combined inputs and outputs capacity can reach 253 through the switch, switching signal sources via APP.
- * Stable 24/7 operation.
- * Lightning protection, surge protection, ESD protection.

LKV383-M5.0



1080P@60Hz over IP Extender with IR / Multi-view / APP Control

- * Supports up to 1920x1200@60Hz resolution.
- * Transmission Distance - One to Many: 120m over CAT6/6A/7, 100m over CAT5e, 80m over CAT5
- * One to One | One to Many | Many to Many | Switches Cascade(100Mbps switch).
- * Uni-directional IR pass-back(20~60KHz).
- * Supports up to 2x2 Multiview.
- * The maximum combined inputs and outputs capacity can reach 253 through the switch, switching signal sources via APP.
- * Stable 24/7 operation.
- * Lightning protection, surge protection, ESD protection.

LKV473-M5.0



4K@60Hz over IP Extender with Multi-view and APP Control

- * Supports up to 4096x2160@60Hz resolution.
- * Transmission Distance - One to Many: 120m over CAT6/6A/7, 100m over CAT5e, 80m over CAT5
- * One to One | One to Many | Many to Many | Switches Cascade(1G switch).
- * Supports up to 2x2 Multiview.
- * Supports up to 253 signal source inputs and 253 signal outputs, switching signal sources via APP.
- * Stable 24/7 operation.
- * Lightning protection, surge protection, ESD protection.

LKV483-M5.0



4K@60Hz over IP Extender with IR / Multi-view / APP Control

- * Supports up to 4096x2160@60Hz resolution.
- * Transmission Distance - One to Many: 120m over CAT6/6A/7, 100m over CAT5e, 80m over CAT5
- * One to One | One to Many | Many to Many | Switches Cascade(1G switch).
- * Uni-directional IR pass-back(20~60KHz).
- * Supports up to 2x2 Multiview.
- * Supports up to 253 signal source inputs and 253 signal outputs, switching signal sources via APP.
- * Stable 24/7 operation.
- * Lightning protection, surge protection, ESD protection.

iMMS-IM01



1080P@60Hz over IP Matrix with Video Wall + POE APP Control

- * Supports up to 1920x1200/1920x1080@60Hz resolution.
- * Transmission Distance - One to Many: 120m over CAT6/6A/7, 100m over CAT5e, 80m over CAT5.
- * One to One | One to Many | Many to Many | Switches Cascade(1Gb switch).
- * POE(Power over Ethernet) is available.
- * Local HDMI loop output on transmitter.
- * Bi-directional IR pass-back(20~60KHz).
- * RS-232 pass-through and command control | I/O interface control.
- * Video Wall: Up to 5x5 (also include 1x1/1x2/ 1x3/1x4/1x5/2x1/2x2/2x3/ 2x4/2x5/3x1/3x2/3x3/3x4/3x5/4x1/4x2/4x3/4x4/4x5/5x1/5x2/5x3/5x4/5x5) .
- * Supports up to 253 signal source inputs and 253 signal outputs, flexible many-to-many configuration via APP.
- * Stable 24/7 operation.
- * Lightning protection, surge protection, ESD protection.

iMMS-IM02



4K@60Hz over IP Matrix with Video Wall + POE + APP Control

- * Supports up to 4K@60Hz resolution.
- * Transmission Distance - One to Many: 120m over CAT6/6A/7, 100m over CAT5e, 80m over CAT5.
- * One to One | One to Many | Many to Many | Switches Cascade(1Gb switch).
- * POE(Power over Ethernet) is available.
- * Local HDMI loop output on transmitter.
- * Bi-directional IR pass-back(20~60KHz).
- * RS-232 pass-through and command control | I/O interface control.
- * Video Wall: Up to 5x5 (also include 1x1/1x2/ 1x3/1x4/1x5/2x1/2x2/2x3/2x4/ 2x5/3x1/3x2/3x3/3x4/3x5/4x1/4x2/ 4x3/4x4/4x5/5x1/5x2/5x3/5x4/5x5) .
- * Supports up to 253 signal source inputs and 253 signal outputs, flexible many-to-many configuration via APP.
- * Stable 24/7 operation.
- * Lightning protection, surge protection, ESD protection.

LKV373KVM-M5.0



1080P@60Hz over IP Extender with Multi-view and APP Control

- * Supports up to 1920x1200@60Hz resolution.
- * Supports KVM transmitting keyboard and mouse data via LAN cable,easy to control computers, NVRs or other media players.
- * Transmission Distance : 120m over CAT6/6A/7, 100m over CAT5e, 80m over CAT5
- * One to One | One to Many | Many to Many | Switches Cascade (100Mbps switch).
- * Supports up to 2x2 Multi-view.
- * The maximum combined inputs and outputs capacity can reach 253 through the switch, switching signal sources via APP.
- * Stable 24/7 operation.
- * Lightning protection, surge protection, ESD protection.

LKV473KVM-M5.0



4K@60Hz over IP Extender with Multi-view and APP Control

- * Supports up to 4096x2160@60Hz resolution.
- * Supports KVM transmitting keyboard and mouse data via LAN cable,easy to control computers, NVRs or other media players.
- * Transmission Distance : 120m over CAT6/6A/7, 100m over CAT5e, 80m over CAT5
- * One to One | One to Many | Many to Many | Switches Cascade (100Mbps switch).
- * Supports up to 2x2 Multi-view.
- * The maximum combined inputs and outputs capacity can reach 253 through the switch, switching signal sources via APP.
- * Stable 24/7 operation.
- * Lightning protection, surge protection, ESD protection.

iMMS-IM03-KVM



4K@60Hz over IP KVM Matrix with Video Wall + POE + APP Control

- * Supports up to 4K@60Hz resolution.
- * Supports KVM transmitting keyboard, mouse and APP control
- * Transmission Distance - One to Many: 120m over CAT6/6A/7, 100m over CAT5e, 80m over CAT5.
- * One to One | One to Many | Many to Many | Switches Cascade(1Gb switch).
- * Local HDMI loop output on transmitter.
- * Bi-directional IR pass-back(20~60KHz).
- * Video Wall: Up to 5x5 (also include 1x1/1x2/ 1x3/1x4/1x5/2x1/2x2/2x3/2x4/2x5/ 3x1/3x2/3x3/3x4/3x5/4x1/4x2/4x3/4x4/4x5/5x1/5x2/5x3/5x4/5x5) .
- * Supports up to 253 signal source inputs and 253 signal outputs, flexible many-to-many configuration via APP.
- * Stable 24/7 operation.
- * Lightning protection, surge protection, ESD protection.

iMMS-RX-Multiview



4K@60Hz over IP Matrix Multiview Processor Receiver with APP Control

- * Supports up to 4096x2160@60Hz/3840x2160@60Hz resolution.
- * Transmission Distance - One to Many: 120m over CAT6/6A/7, 100m over CAT5e, 80m over CAT5.
- * One to One | One to Many | Many to Many | Switches Cascade(1Gb switch).
- * POE(Power over Ethernet) is available.
- * RS-232/RS-485 pass-through and command control | I/O interface control.
- * Audio Extraction: 3.5mm L/R.
- * Multi-view: Up to 3x3, display and switch simultaneously up to nine sources on ultra-flexible & all-new PiP (picture in picture) PbP (picture by picture), quad-view, nine-view and more.
- * Stable 24/7 operation.
- * Lightning protection, surge protection, ESD protection.

LKV373Audio-5.0



Over IP Audio Matrix with APP Control

- * Audio Embedding: 3.5mm L/R, 6.3mm L/R, RCA, XLR, Phoenix | Audio Extraction: 3.5mm L/R, 6.3mm L/R, RCA, XLR, Phoenix.
- * Transmission Distance - One to Many: 120m over CAT6/6A/7, 100m over CAT5e, 80m over CAT5.
- * One to One | One to Many | Many to Many | Switches Cascade.
- * Stable 24/7 operation.
- * Lightning protection, surge protection, ESD protection

iMMS-Audio



Over IP Audio Matrix with APP Control

- * Audio Embedding: 3.5mm L/R, 6.3mm L/R, RCA, XLR, Phoenix | Audio Extraction: 3.5mm L/R, 6.3mm L/R, RCA, XLR, Phoenix.
- * Transmission Distance - One to Many: 120m over CAT6/6A/7, 100m over CAT5e, 80m over CAT5.
- * One to One | One to Many | Many to Many | Switches Cascade(1Gb switch).
- * POE(Power over Ethernet) is available.
- * Stable 24/7 operation.
- * Lightning protection, surge protection, ESD protection

LKV383Audio-5.0



Over IP Audio Matrix with APP Control

- * Audio Embedding: 3.5mm L/R, 6.3mm L/R, RCA, XLR, Phoenix | Audio Extraction: 3.5mm L/R, 6.3mm L/R, RCA, XLR, Phoenix.
- * Transmission Distance - One to Many: 120m over CAT6/6A/7, 100m over CAT5e, 80m over CAT5.
- * One to One | One to Many | Many to Many | Switches Cascade.
- * Stable 24/7 operation.
- * Lightning protection, surge protection, ESD protection

iMMS-Controller-Serial Port



RS-232/RS-485/RS-422 Controller with APP Control

- * Built on ipicolor STREAM technology to deliver medium-compression AV signals across long distances with low latency.
- * RS-232/RS-485/RS-422 pass-through and command control via APP.
- * Transmission Distance : 120m over CAT6/6A7, 100m overCAT5e, 80m over CAT5.
- * One to One | One to Many | Many to Many | Switches Cascade.
- * Stable 24/7 operation.
- * Lightning protection, surge protection, ESD protection.

iMMS-Controller-IR



Bi-directional IR pass back with APP Control

- * Built on ipicolor STREAM technology to deliver medium-compression AV signals across long distances with low latency.
- * Transmission Distance: 120m over CAT6/6AV7, 100m overCAT5e, 80m over CAT5.
- * Bi-directional IR pass back.
- * One-to-one | One-to-many | Many-to-many | Switch Cascade
- * Stable 24/7 operation.
- * Lightning protection, surge protection, ESD protection.

iMMS-Recorder



4K Over IP Network Video Recorder with APP Control

- * Supports up to 4096x2160@60Hz resolution.
- * Supports USB 3.0 devices or external hard drives for video recording with the iMCS series transmitter.
- * Supports USB 2.0 devices such as mice, keyboards, flash drives, etc.
- * APP control, manageable and controllable via mobile phones, tablets, and computers.

