

BREA NORTHPOINT

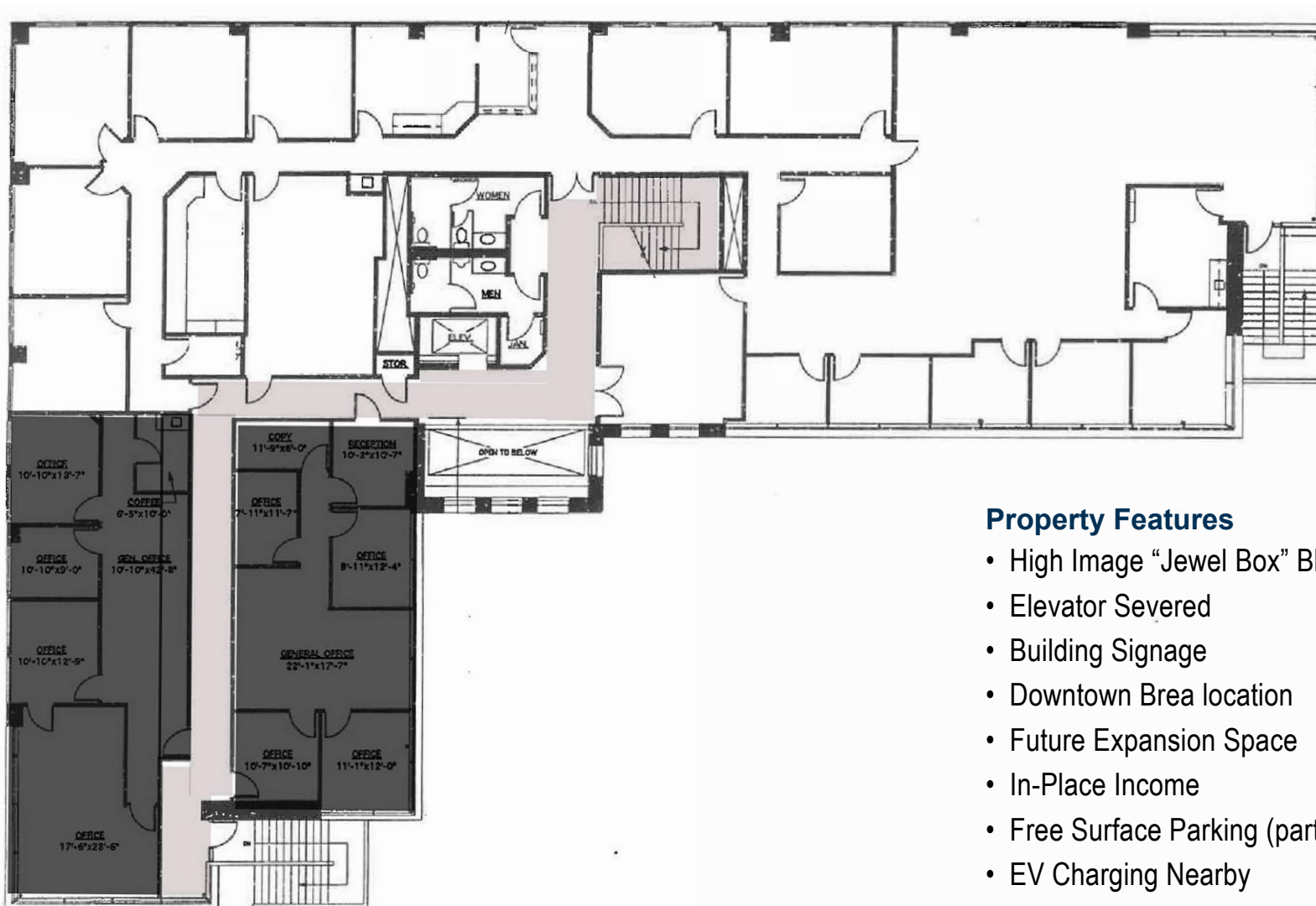
±8,464 Sq. Ft (vacant to owner to occupy) 16,845 SF Office Building

Voit
REAL ESTATE SERVICES

FOR SALE



203 N. Brea Blvd., Brea, CA



Property Features

- High Image “Jewel Box” Bldg.
- Elevator Severed
- Building Signage
- Downtown Brea location
- Future Expansion Space
- In-Place Income
- Free Surface Parking (partially covered)
- EV Charging Nearby
- Numerous Retail Amenities within walking distance including [Starbucks](#), [Yard House](#), [Cava](#), [Panda Express](#), [Shake Shack...etc.](#)

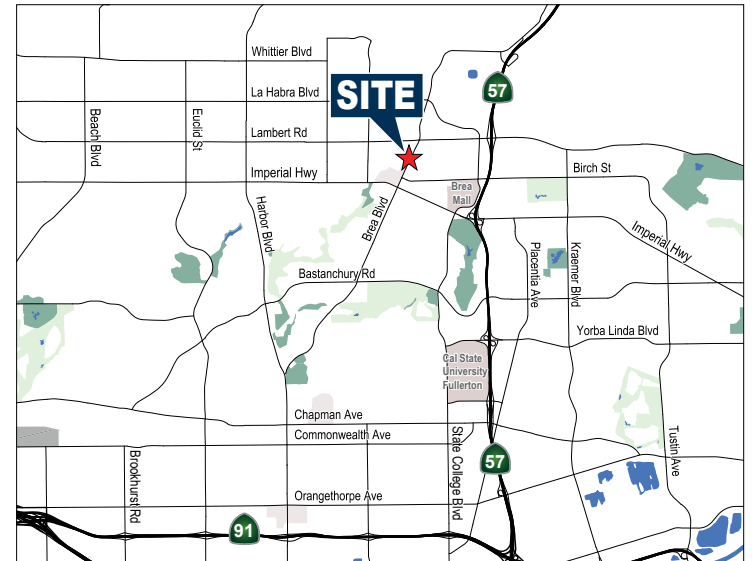
Barry Walshe
 Vice President
 714.803.8300
 bwalshe@voitco.com
 Lic. #01213417

Voit
 REAL ESTATE SERVICES

2400 E. Katella Ave., Ste. 750, Anaheim, CA 92806
 714.978.7880 • 714.978.9431 Fax www.VoitCo.com

Licensed as Real Estate Salespersons by the DRE. The information contained herein has been obtained from sources we deem reliable. While we have no reason to doubt its accuracy, we do not guarantee it. ©2026 Voit Real Estate Services, Inc. All Rights Reserved. Lic. #01991785

WALNUT WAY



Barry Walshe
Vice President
714.803.8300
bwalshe@voitco.com
Lic. #01213417

Voit
REAL ESTATE SERVICES

2400 E. Katella Ave., Ste. 750, Anaheim, CA 92806
714.978.7880 • 714.978.9431 Fax www.VoitCo.com

Licensed as Real Estate Salespersons by the DRE. The information contained herein has been obtained from sources we deem reliable. While we have no reason to doubt its accuracy, we do not guarantee it. ©2026 Voit Real Estate Services, Inc. All Rights Reserved. Lic. #01991785

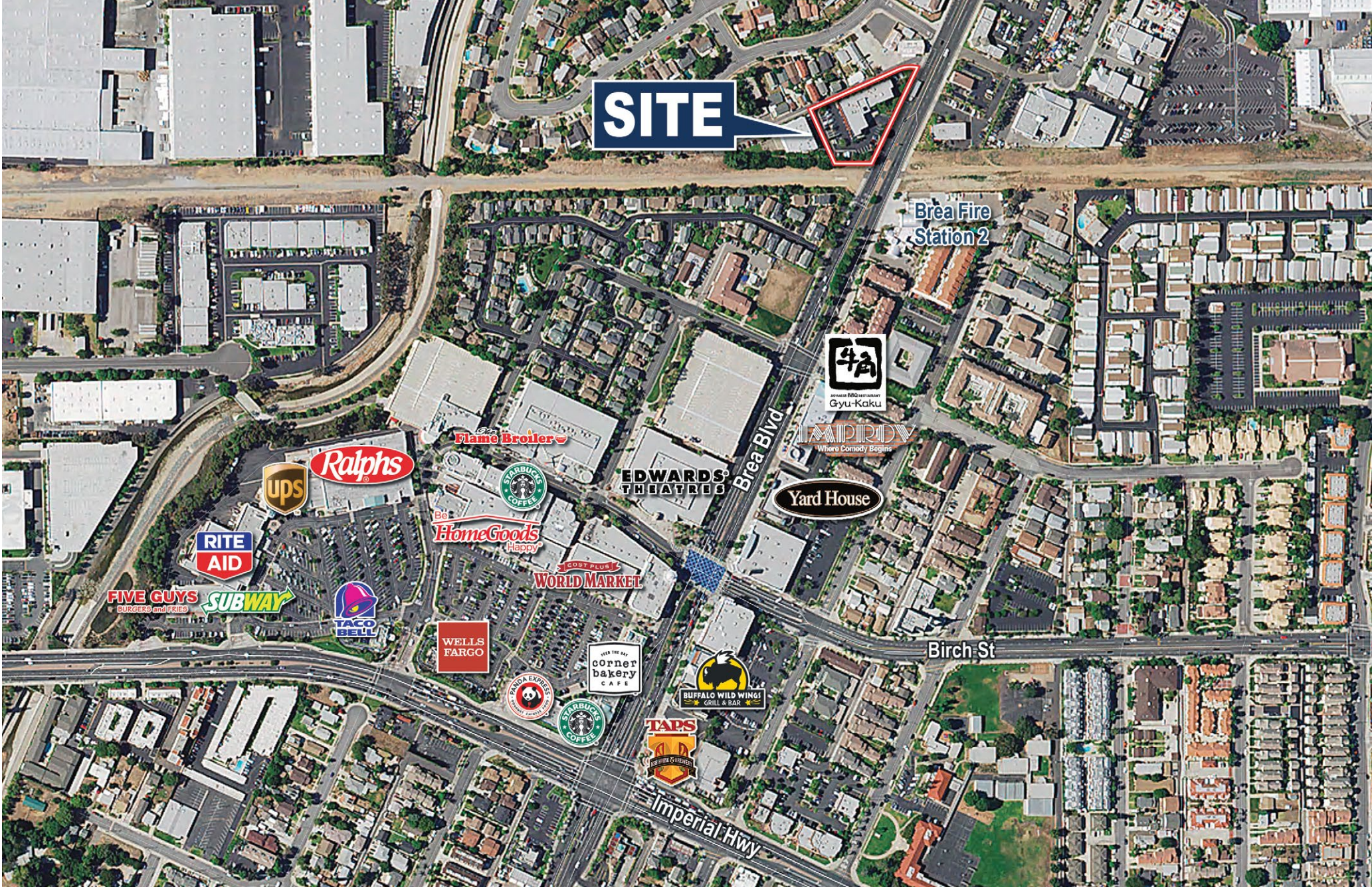


Barry Walshe
Vice President
714.803.8300
bwalshe@voitco.com
Lic. #01213417

Voit
REAL ESTATE SERVICES

2400 E. Katella Ave., Ste. 750, Anaheim, CA 92806
714.978.7880 • 714.978.9431 Fax www.VoitCo.com

Licensed as Real Estate Salespersons by the DRE. The information contained herein has been obtained from sources we deem reliable. While we have no reason to doubt its accuracy, we do not guarantee it. ©2026 Voit Real Estate Services, Inc. All Rights Reserved. Lic. #01991785



SITE

Brea Fire Station 2



Birch St

Imperial Hwy

Barry Walshe
 Vice President
 714.803.8300
 bwalshe@voitco.com
 Lic. #01213417

Voit
 REAL ESTATE SERVICES

2400 E. Katella Ave., Ste. 750, Anaheim, CA 92806
 714.978.7880 • 714.978.9431 Fax www.VoitCo.com

Licensed as Real Estate Salespersons by the DRE. The information contained herein has been obtained from sources we deem reliable. While we have no reason to doubt its accuracy, we do not guarantee it. ©2026 Voit Real Estate Services, Inc. All Rights Reserved. Lic. #01991785



Barry Walshe
Vice President
714.803.8300
bwalshe@voitco.com
Lic. #01213417

Voit
REAL ESTATE SERVICES

2400 E. Katella Ave., Ste. 750, Anaheim, CA 92806
714.978.7880 • 714.978.9431 Fax www.VoitCo.com

Licensed as Real Estate Salespersons by the DRE. The information contained herein has been obtained from sources we deem reliable. While we have no reason to doubt its accuracy, we do not guarantee it. ©2026 Voit Real Estate Services, Inc. All Rights Reserved. Lic. #01991785